



# Cheltenham - Mentone Uniting Church

## News Letter

Vol 2 No 25 12th September 2021



### From Spanish Flu Days

This public health poster was part of a government campaign in New South Wales to limit the spread of the deadly Spanish flu pandemic of 1918–19, in which about 12,000 Australians died, 6300 of them in New South Wales. Soldiers returning from World War I and infected people were quarantined, wearing masks in public places was made compulsory, schools were closed, many public activities were banned or restricted and pharmacy prices were regulated.

This illustration by children's illustrator and author May Gibbs (1877–1969) uses familiar characters from her children's books to encourage readers, especially children, to wear masks to reduce the spread of the deadly infection. Gibbs was one of the most popular children's writers of the time, her characters were inspired by the uniqueness of the Australian bush.

The Spanish flu was so called because the outbreak was first noticed in Spain, in 1918, and it killed 8 million in Spain alone. The pandemic spread across the world in three waves beginning in 1918 and 1919 killing between 20 and 50 million people worldwide, more than the total number killed in the First World War.

Public health campaigns before the age of radio and television used the poster as an effective advertising medium. Government bodies made wide use of posters for various campaigns, but they were used most widely in public health campaigns.

The illustration uses the popular icon created by May Gibbs, the 'gumnut baby', one of the bush babies series that made her famous. One of the first appearances of the gumnut babies was in an illustration to Ethel Turner's story *The Magic Button*, published in 1913. In 1916 Gibbs published her first book, *Gumnut Babies*. Her famous book about the adventures of two brothers, *Snugglepot and Cuddlepie*, was first published in 1918.

Gibbs used distinctly Australian motifs at a time when the Australian bush was an important symbol of national identity. An upsurge in Australian nationalism in the arts and literature began in the 1890s, with bush poets such as Henry Lawson and Banjo Paterson receiving wide acclaim for their uniquely Australian stories. The bush ethos was an important part of the early nationalism that followed Federation in 1901.

*Thanks to Helen Cole for this information*

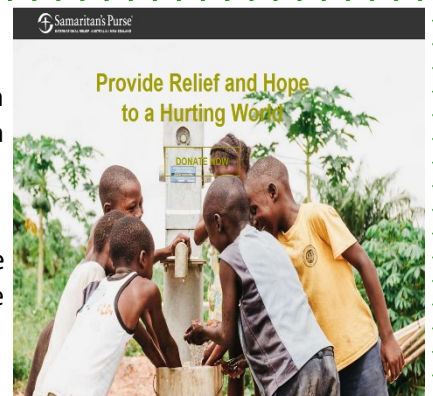


### "The Samaritan's Purse" - last call

**CHRISTMAS BOXES** for Samaritans Purse are available for filling from Dawn Morrison 9585 5335. Notes about the requirements come with the boxes. Dawn has a limited number but can get more. They must be returned by the end of September. For BLACK ROCK folk, boxes are available from Barbara Shying.

**COVID restrictions may prevent you from physically collecting from Dawn.** To donate to and for more information on The Samaritan's Purse, click on this link or the image opposite

<https://samaritanspurse.org.au>



### Your Weekly Offering

**WEEKLY OFFERINGS:** Thanks to everyone who have continued to make their weekly offering.

**Envelopes:** You may do this by putting your pledge in the envelopes and bring them to church.

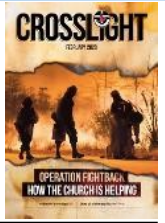
**Direct Debit:** (include your envelope number if applicable)

Payee "Uniting Church in Australia Cheltenham Mentone Parish Council", BSB 06 3119, Account Number 1014 1206



**CROSSLIGHT** is available on the internet - click on the following link or the CROSSLIGHT image to view online. [www.crosslight.org.au](http://www.crosslight.org.au)

Print copies of CROSSLIGHT usually available at the entrance of the Black Rock Uniting Church (NOT from the Manse verandah) latest CROSSLIGHT now available from David Vine, 4 Jedda Crt. Cheltenham 9583 7373.



## Prayers of the People

*We pray especially for -*

Margaret Walker (*recovering from a fall*)  
Peter Aumann and family  
Robert (*Joan Wright's brother*)  
Bruce & Valda (*friends of Jo-ann & David*)  
Kerri-Ann (*Jo-ann's daughter*)  
Anita and Rod  
Barb Loosemore

Stuart *as he struggles with addiction*  
Andrew (*Joan Lum's relative*)  
Jenny, Janine, Cec  
and June Bartholomeusz  
Audrey Fewster  
Margaret's neighbour Joan  
Gloria Sampson & Family

Gemma and Teresa  
Heather (*daughter of close friend of Graeme & Joan*)  
Tina and her two teenage sons (*also friends of Graeme & Joan*)  
Susan Bartell  
Bronwyn  
Grace Fairbank



## Church on the Internet - Sunday 10am (doors open 9:45 am)



If you don't have Zoom on your computer/laptop/iPad/Smartphone, click on <https://zoom.us/support/download>  
Then click on this link below or the "Sunday Church" image to join our Service -  
<https://us02web.zoom.us/j/85247373230?pwd=WIM2UHJEemFWS3RScnNqM3puaGdZdz09>

Otherwise open Zoom and enter the following - **Meeting ID: 852 4737 3230** **Passcode: 836844**  
You can also join us on your phone by dialling **03 7018 2005** and entering the above meeting details.  
The above link and meeting details apply for all our services until the **December 26th 2021**.



## Videos on the Internet



**NEW** YouTube Channel; Follow this link or click on the YouTube logo  
[https://www.youtube.com/channel/UCH-y4pZ\\_f\\_LezegzNZi6nnQ](https://www.youtube.com/channel/UCH-y4pZ_f_LezegzNZi6nnQ)  
to view selected sermons and service preludes



## Social Collection Department

**BayCISS** - collection of goods by Graeme & Joan Wood has recommenced. Leave goods with them at 66 Bernard St. Cheltenham, or call them (Graeme & Joan Wood) on 9555 0462 (*BayCISS contact number 9555 9910*)  
From BayCISS "Many thanks to all those who continue to drop off food parcels".

**Emerge** - Financial help is the best way to help - Cheques to - GPO Box 420 Melbourne VIC 3001 or donate via the website [www.emergesupport.org.au](http://www.emergesupport.org.au) Emerge welcomes vouchers for supermarkets or art materials which children could use at home - materials, pencils, colouring books etc. Margaret Bode is happy to take items to the Moorabbin office if you leave them at her home, 16 Monaco Street Parkdale.



## "Man's Best (and wisest?) Friend"

